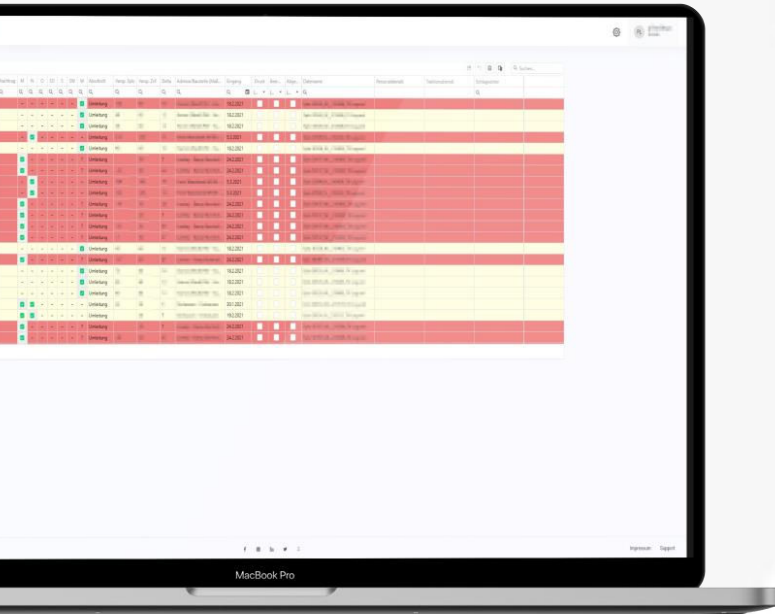


Railroad construction site management



Construction sites at a glance

Managing construction site messages easily

With the help of the **BBM** Railway Construction Site Management you get the possibility to create construction site messages (**FPLO's** and **ZvF's**) for your railway **rail transport company** simply and clearly and to include them in your timetable planning. This means reliable **planning** and enormous **time and money savings** for your company.

With BBM, you can always keep an eye on construction sites and their effects on your transports and make your planning more efficient in this respect.

Advantages

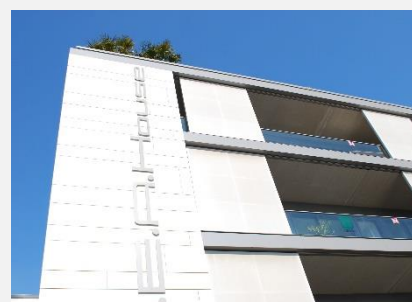
- ✓ Clear display of all construction site messages for easier scheduling
- ✓ High time & money savings thanks to automation of all relevant information
- ✓ Uncomplicated handling with simultaneous maximum benefit for you as an RU
- ✓ Collaborative work in one system

Features

- ✓ Clear table view & dashboards of timetable arrangements & roadworks impacts.
- ✓ Clear map view of running routes & detours
- ✓ Routability check (based on ERA parameters)
- ✓ Daily updated controlling of your additional efforts
- ✓ Extensive road works management on the German rail network
- ✓ No installation necessary

The catkin GmbH

We have been developing and implementing customized communication solutions in the B2B sector since 2013. With our catkin communication portal we mainly support industrial and transport companies. With the help of our modern software technologies, our customers especially design their logistics, but also other business areas, in a transparent and secure way.



catkin® GmbH
 Hörder Hafenstraße 11
 44263 Dortmund
www.catkin.eu

Follow Us!
 Facebook | LinkedIn |
 Twitter | Instagram |
 Xing