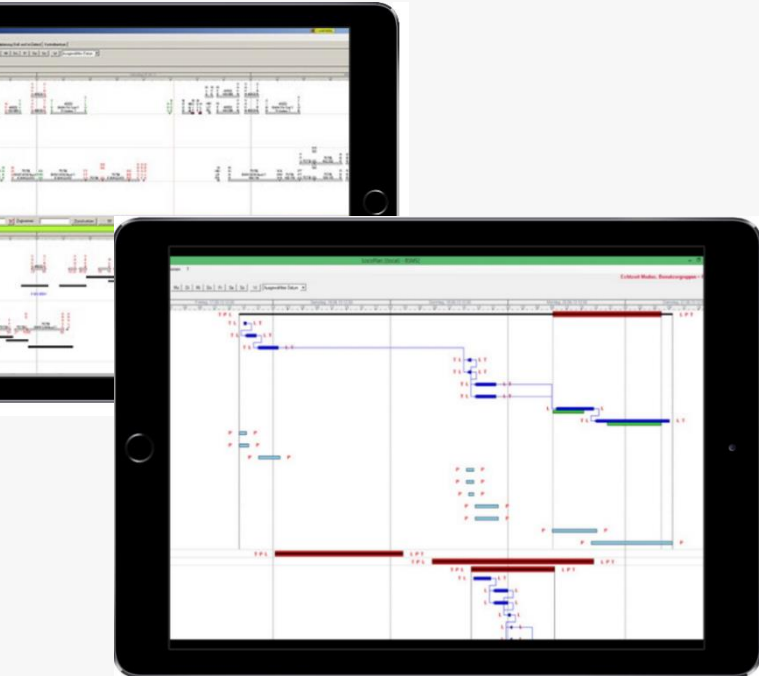


Your digitalisation of rail transport

with LocoPlan and catkin



LocoPlan at a glance

The smart solution for the railway industry.

LocoPlan combines an efficient **railway planning** for trains, locomotives and personnel with an **up-to-date overview** of the actual situation, highest **productivity** in your daily business and the **visualization** of locomotive and personnel availability as well as any conflicts of place and time.

LocoPlan offers you:

- Locomotive planning & controlling
- Train monitor
- Locomotive & personnel management
- Maintenance monitoring

Advantages

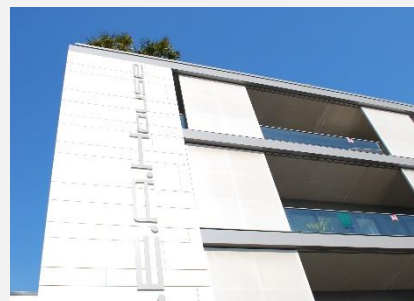
- ✓ Transparent planning, including all relevant information
- ✓ High process reliability due to the clear visualization of all running data
- ✓ Evaluation of individual BI solutions on request
- ✓ Interface to the catkin customer portal enables uncomplicated communication with providers and own (mobile) personnel
- ✓ catkin SmartApp for mobile staff

Features

- ✓ Uncomplicated planning of train traffic
- ✓ Preliminary planning of traction, staff activities and timetable
- ✓ Assignment of locomotives and personnel
- ✓ Disposition & controlling in one application
- ✓ Real time and integration of personnel via app
- ✓ Fine control of the process

The catkin GmbH

We have been developing and implementing customized communication solutions in the B2B sector since 2013. With our catkin communication portal we mainly support industrial and transport companies. With the help of our modern software technologies, our customers especially design their logistics, but also other business areas, in a transparent and secure way.



catkin® GmbH
Hörder Hafenstraße 11
44263 Dortmund
www.catkin.eu

Follow Us!
Facebook | LinkedIn |
Twitter | Instagram |
Xing